



THE UNITED KINGDOM VEHICLE APPROVAL AUTHORITY

COMMUNICATION CONCERNING THE APPROVAL GRANTED ⁽¹⁾/ ~~APPROVAL EXTENDED ⁽⁴⁾/~~
~~APPROVAL REFUSED ⁽⁴⁾/~~ ~~APPROVAL WITHDRAWN ⁽⁴⁾/~~ ~~PRODUCTION DEFINITELY~~
~~DISCONTINUED ⁽⁴⁾~~ OF A TYPE OF DEVICE FOR THE ILLUMINATION OF REAR REGISTRATION
PLATES OF MOTOR VEHICLES (EXCEPT MOTOR CYCLES) AND THEIR TRAILERS PURSUANT TO
ECE REGULATION NO. 4.



Approval No: 04R-007561

Extension No: Not applicable

1. Trade mark or name of the device: Rubbolite
2. Manufacturer's name for the type of device: M647 Number Plate
3. Manufacturer's name and address:
Truck-Lite Europe Limited
Barrows Road
Harlow
Essex CM19 5FA
United Kingdom
4. If applicable, name and address of manufacturer's representative: Not applicable
5. Submitted for approval on: 11 August 2014
6. Technical service responsible for conducting approval tests: Vehicle Certification Agency
7. Date of report issued by that service: 11 August 2014
8. Number of report issued by that service: ESQ305886

9. Concise description: 2 x LEDs: 1W total at 12V, 2W total at 24V

Device for illuminating: ~~a tall plate~~

a wide plate

~~a plate for agricultural or forestry tractor~~⁽⁴⁾

Number and category (ies) of light sources(s): 2 x LEDs

Light source module: ~~YES~~/NO⁽¹⁾

Light source module specific identification code: Not applicable

Geometrical conditions of installation (position(s) and inclination(s) of the device in relation to the space to be occupied by the registration plate and/or different inclinations of this space):
See manufacturer's documentation

10. Position of the approval mark: On the lens

11. Reason(s) for extension (if applicable): Not applicable

12. Approval ~~GRANTED/REFUSED/EXTENDED/WITHDRAWN~~

13. Place: BRISTOL

14. Date: 26 AUGUST 2014

15. Signature:



A. W. STENNING
Head of Technical and Quality Support Group

16. The list of documents deposited with the Administrative Service which has granted approval is annexed to this communication and may be obtained on request.

Any remarks: Approval to Supplement 16

(1) Strike out what does not apply.

(2) For lamps with non-replaceable light sources indicate the number and the total wattage of the light sources.



Application: New Approval

Manufacturer: Truck-Lite Europe Limited

Approval number:
E11 04R-007561

Date: 13/8/14

VCA Job number: ESQ305886

Reason for Approval :

1. Approval to introduce an adjustable number plate carrier to comply with ECE Reg. 4

0 GENERAL

0.1. Make (trade name of manufacturer): Rubbolite

0.2. Type and general commercial description(s): M647 Number plate

0.3. Means of identification of type, if marked on the vehicle (b): See Drawing

0.3.1. Location of that marking: Drawing Reference

0.4. Category of Lamp (c):
4R-00

0.5. Name and address of manufacturer:

Truck-Lite Europe Limited
Barrows Road
Harlow
Essex. CM19 5FA
United Kingdom

0.8. Address(es) of assembly plant(s):

Barrows Road
Harlow
Essex. CM19 5FA
United Kingdom

1. Description of the device

1.1. Type of device: number plate

1.1.1. Device function(s): number plate

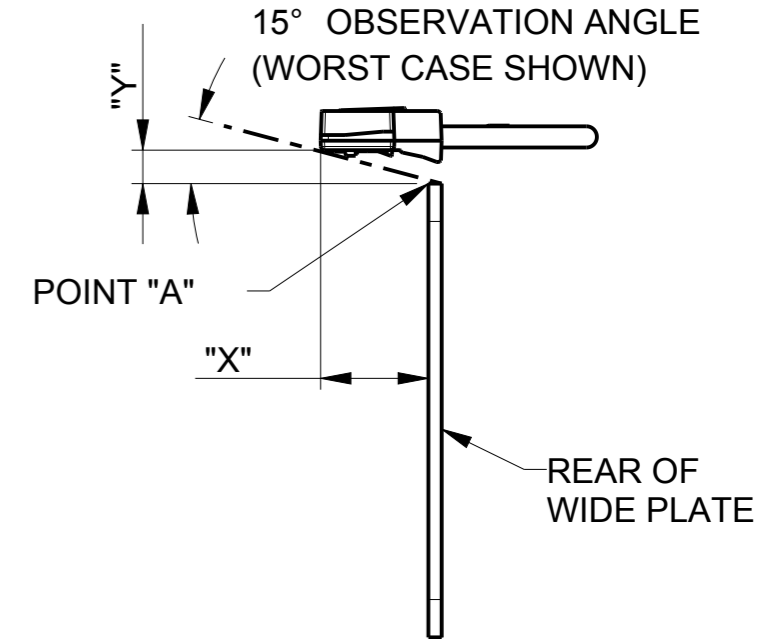
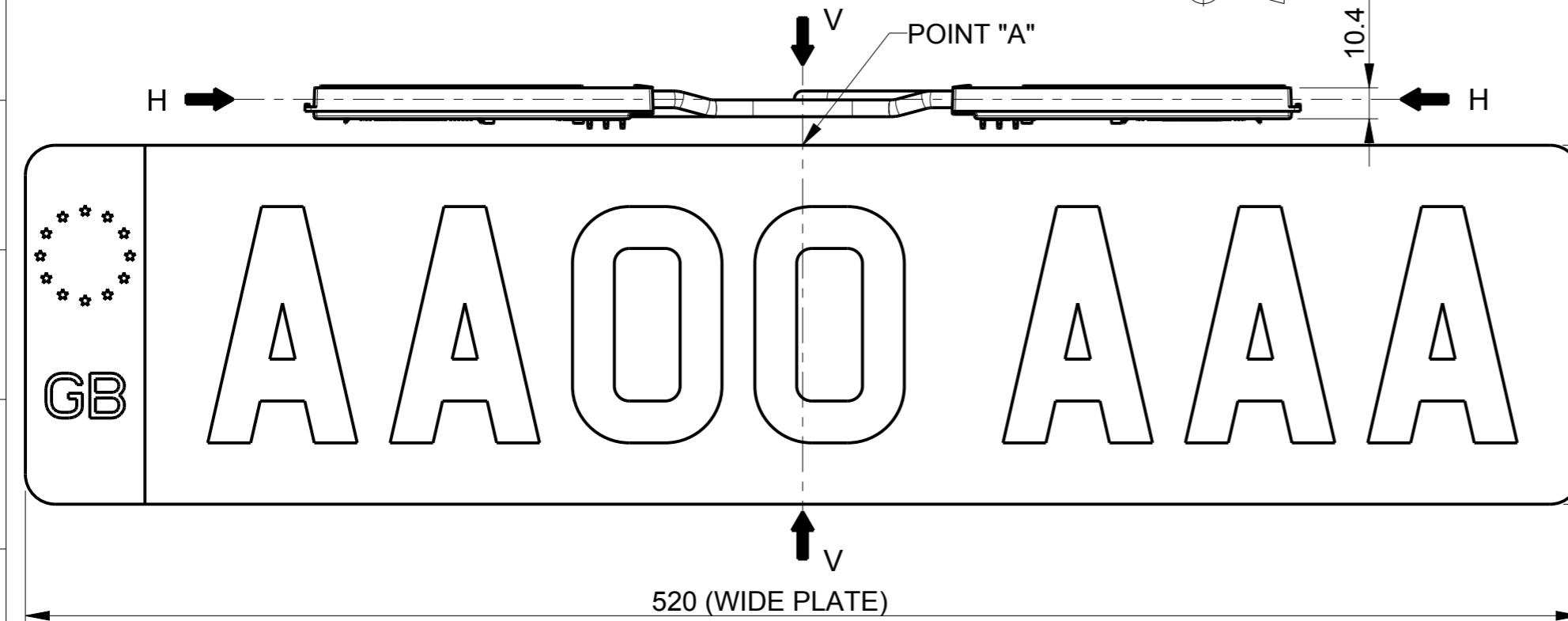
1.1.2. Category or class of device: Reg 4



- 1.1.3. Colour of the light emitted or reflected: white
- 1.2. Drawing(s) in sufficient detail to permit identification of the type of the device and showing: N/A
 - 1.2.1. in what geometrical position the device is to be mounted on the vehicle (not applicable to rear registration plate lamps): N/A
 - 1.2.2. the axis of observation to be taken as the axis of reference in the tests (horizontal angle $H = 0^\circ$, vertical angle $V = 0^\circ$ and the point to be taken as the centre of reference in the said tests (not applicable to retro-reflecting devices and rear registration plate lamps): Point of reference centre of reflex face
 - 1.2.3. the position intended for the EC component type-approval mark: Marking on lens
 - 1.2.4. for rear registration plate lamps, the geometrical position in which the device is to be fitted in relation to the space to be occupied by the registration plate, and the outline of the area adequately illuminated: See drawing
 - 1.2.5. for headlamps and front fog lamps, a frontal view of the lamps with details of lens ribbing, if any, and the cross section :N/A
- 1.3. A brief technical description stating, in particular, with the exception of lamps with non replaceable light sources, the category or categories of light sources prescribed which shall be one or more of those contained in Directive 76/761/EEC (not applicable to retro-reflecting devices): Two LED units within PP number plate carrier
- 1.4. Specific information
 - 1.4.1. For rear registration plate lamps, a statement whether the device is intended to illuminate a wide/tall/both wide and tall plate: Wide Plate
 - 1.4.2. For headlamps
 - 1.4.2.1. information whether the headlamp is intended to provide both a dipped beam and main beam or only one of those beams: N/A
 - 1.4.2.2. information in case the headlamp is intended to provide a dipped beam, if it is designed for both left-hand and right-hand traffic or for either left-hand or right-hand traffic only: N/A
 - 1.4.2.3. if the headlamp is equipped with an adjustable reflector, an indication of the mounting position(s) of the headlamp in relation to the ground and the longitudinal median plane of the vehicle, if the headlamp is for use in that (those) position(s) only N/A
 - 1.4.3. For position lamps, stop lamps and direction indicators N/A
 - 1.4.3.1. if the device may also be used in an assembly of two lamps of the same category: N/A
 - 1.4.3.2. in the case of a device with two levels of intensity (stop lamps and category 2b direction indicators), arrangement diagram and specification of the characteristics of the system ensuring the two levels of intensity: N/A
 - 1.4.4. For retro-reflecting devices, a brief description giving the technical specifications of the materials of the retro-reflecting optical unit: N/
 - 1.4.5.
 - 1.4.6. For reversing lamps, a statement whether the device is intended to be installed on a vehicle exclusively in a pair of devices: N/A



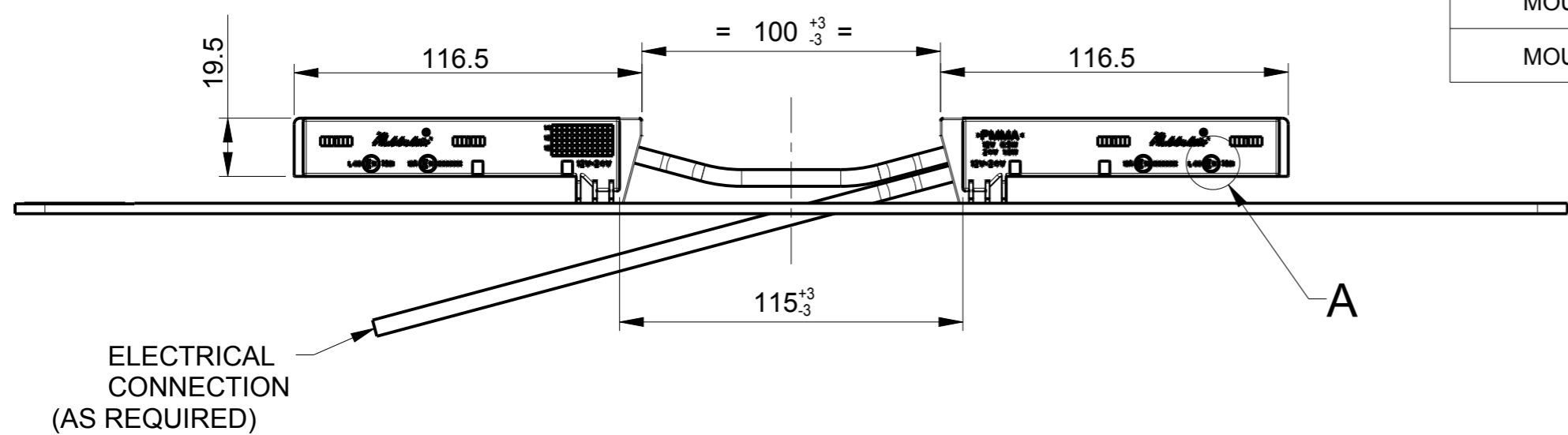
THIRD ANGLE PROJECTION



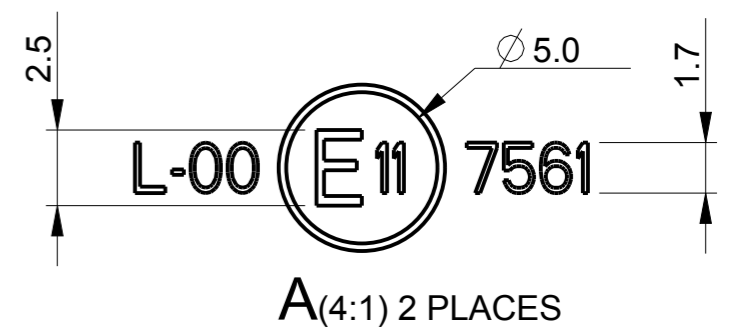
Y = DISTANCE BETWEEN OPTICAL FACE OF LENS / LAMP AND TOP EDGE OF WIDE PLATE
 X = DISTANCE BETWEEN TOP EDGE OF LENS / LAMP AND FRONT FACE OF WIDE PLATE

AXIS H - H TO BE PARALLEL TO THE GROUND
 AXIS V - V TO BE PARALLEL TO LONGITUDINAL AXIS OF VEHICLE

NUMBER PLATE MOUNTING OPTIONS FOR POSITION "A"		
PLATE MOUNTING OPTIONS	DIMENSION "X"	DIMENSION "Y"
MOUNTING OPTION 1	28.5mm	8.9mm
MOUNTING OPTION 2	33.0mm	8.9mm



X - APPROVED WORKING ZONE BETWEEN 28.5 TO 33mm
 Y - APPROVED WORKING ZONE BETWEEN 8.9 TO 12.9mm



- LENS / LAMP MATERIALS :
- LIGHT SOURCE = 4 X SURFACE MOUNT LED'S
 - LENS MATERIAL = CLEAR ACRYLIC
 - PCB MATERIAL = FR4 BOARD
 - SEALANT = BLACK POTTING COMPOUND
 - LINKING WIRE AND MAIN HARNESS = 2 CORE ROUND CABLE (ADR RATED)

- OPERATION :
- 12 VOLT & 24 VOLT OPERATION (9 TO 33V) DC
 - DUAL POLARITY FUNCTION +/- / -+
 - CURRENT DRAW = 0.5W AT 12V, 1.0W AT 24V

ALL MODIFICATIONS TO THIS DRAWING MUST BE CARRIED OUT ON Pro/ENGINEER

THIS DRAWING IS CONFIDENTIAL TO THE RECIPIENT
 THIS DRAWING IS THE PROPERTY OF TRUCK-LITE EUROPE LTD AND IT IS NOT TO BE COPIED OR DISCLOSED EITHER IN WHOLE OR IN PART TO ANY OTHER PERSON WITHOUT THE CONSENT IN WRITING OF TRUCK-LITE EUROPE LTD.

WARRANTIES DO NOT COVER DAMAGE TO OR FAULTS IN THE PRODUCT RESULTING FROM ABUSE OR MISUSE, FROM INSTALLATION OR USE IN A MANNER INCONSISTENT WITH OUR INSTRUCTIONS OR FROM THE INCORPORATION OF ANY REPLACEMENT PARTS NOT MANUFACTURED BY US.

**COPYRIGHT©
 TRUCK-LITE EUROPE LTD
 HARLOW ESSEX CM19 5FA**

APPROVAL REQUIREMENTS		TOLERANCES DIMENSIONAL	
ECE REGULATION 4 CATEGORY L		AS STATED	
ENVIRONMENTAL SPECIFICATIONS		ANGULAR	
DRAWN BY	M White	DATE	11-Aug-14
CHECKED		DATE	
DESCRIPTION		ORIGINATOR	
MODEL 647 (MARK 2)		R Field	
OPTICAL APPROVAL - ECE REGULATION 4 CATEGORY L			
THIS PART MUST CONFORM TO RUBBOLITE SPECIFICATION 001: TOXIC AND HAZARDOUS MATERIALS CONTROL			
SIZE	SCALE	PROJECT REF	DRAWING NO.
A3	1:2	HN0000047	M-647 (MARK 2) APPROVAL
SHEET 1/1		ISSUE	CHANGE No
		01	11273

