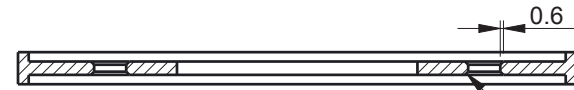


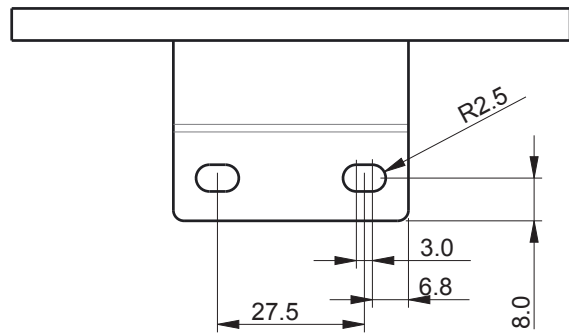
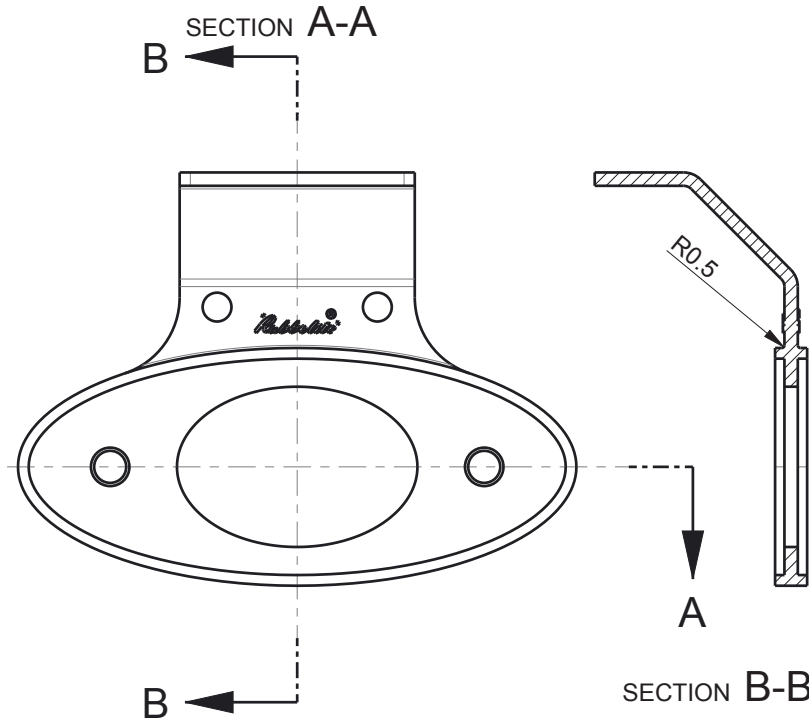
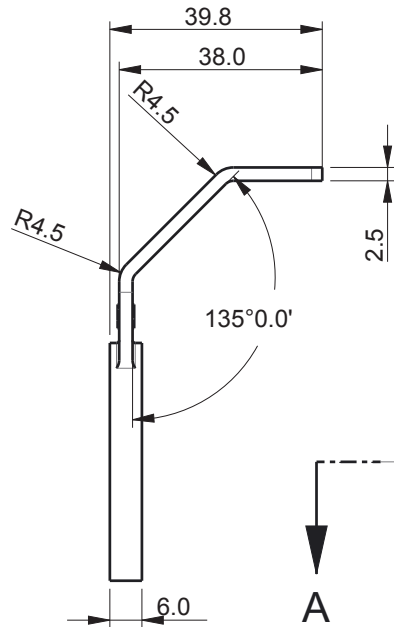
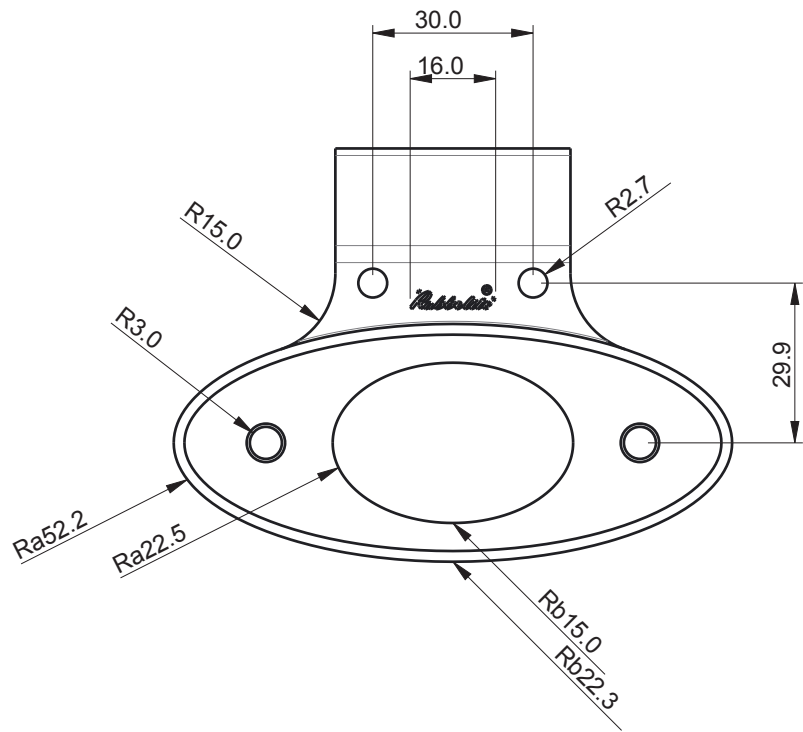
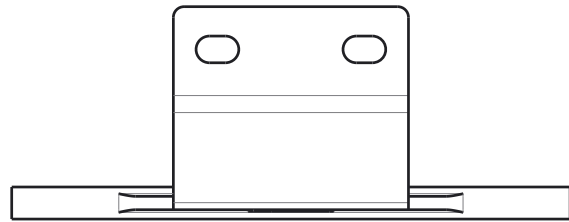
1 2 3 4 5 6 7 8 9 10 11 12 13 14 15 16

IF IN DOUBT ASK DO NOT SCALE UNLESS OTHERWISE STATED ALL DIMENSIONS ARE IN MILLIMETRES

THIRD ANGLE PROJECTION



45° x 0.6MM CHAMFER ON BOTH SIDES



ALL MODIFICATIONS TO THIS DRAWING MUST BE CARRIED OUT ON PRO/ENGINEER

THIS DRAWING IS CONFIDENTIAL TO THE RECIPIENT  
THIS DRAWING IS THE PROPERTY OF FLEXIBLE LAMPS LIMITED AND IT IS NOT TO BE COPIED OR DISCLOSED EITHER IN WHOLE OR IN PART TO ANY OTHER PERSON WITHOUT THE CONSENT IN WRITING OF FLEXIBLE LAMPS LIMITED.

WARRANTIES DO NOT COVER DAMAGE TO OR FAULTS IN THE PRODUCT RESULTING FROM ABUSE OR MISUSE, FROM INSTALLATION OR USE IN A MANNER INCONSISTENT WITH OUR INSTRUCTIONS OR FROM THE INCORPORATION OF ANY REPLACEMENT PARTS NOT MANUFACTURED BY US.

COPYRIGHT ©  
FLEXIBLE LAMPS LTD.  
HARLOW ESSEX CM19 5FA



MATERIAL		TOLERANCES DIMENSIONAL	
PP		ANGULAR	
FINISH		ORIGINATOR	
BLACK		15-Dec-05	
DRAWN BY		DATE	
R Wright		DATE	
CHECKED		DATE	
DESCRIPTION			
HORIZONTAL MOUNT BRACKET FOR M894 RANGE			
THIS PART MUST CONFORM TO RUBBOLITE SPECIFICATION 001:TOXIC AND HAZARDOUS MATERIALS CONTROL			
SIZE	SCALE	PROJECT REF	DRAWING NO.
A3	1:1	DD3413	89294
SHEET 1/1		ISSUE	CHANGE No
1		1	8313