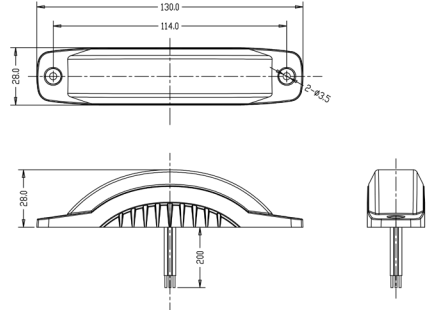


INSTALLATION + OPERATING INSTRUCTIONS



! IMPORTANT ! - Read all instructions before installing and operating the strobe. This scene light must be installed by a qualified automotive technician. Failure to do so may void your warranty.

| | |
|-----------------------|---------------------------------|
| SKU | 308.043 |
| Voltage | 12/24V |
| Technology | LED |
| Mounting | Surface |
| Connection | Fly Lead (200mm) |
| Flash Patterns | 19 |
| Syncable? | Yes (with alternating sync) |
| IP Rating | IP69K |
| Approvals | ECE R65 (Class 1 & 2), ECE R10 |
| Dimensions | 130mm (l) x 28mm (h) x 28mm (d) |

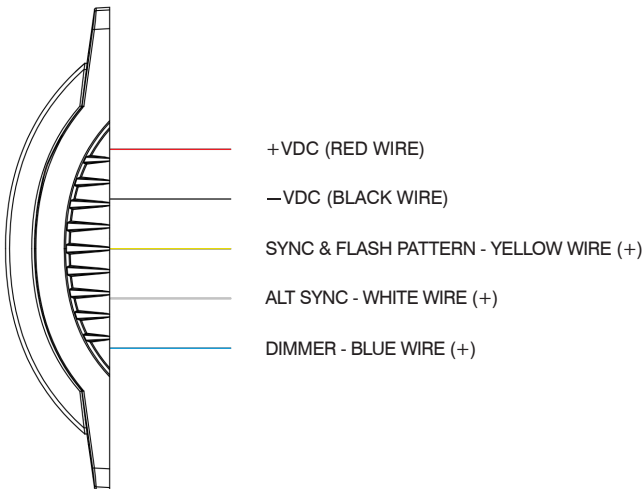
DBG 180° LED Strobe

STROBE FLASH PATTERNS

| | | | |
|----|--|----|-------------------------------------|
| 01 | Single Flash - ECE R65 (All) | 11 | Double Flash (Split) |
| 02 | Double Flash (All) | 12 | Quad Flash (Split) |
| 03 | Quad Flash (All) | 13 | Quint (x5) Flash (Split) |
| 04 | Quint (x5) Flash (All) | 14 | Strobe Flash (Split) |
| 05 | Strobe (All) | 15 | Single Flash + Quad Flash (Split) |
| 06 | Single Flash + Quad Flash (All) | 16 | Single Flash + Strobe Flash (Split) |
| 07 | Single Flash + Strobe Flash (All) | 17 | Random |
| 08 | Single Flash (Slow) (All) | 18 | Combination |
| 09 | Single Flash + Single Flash (Slow) (All) | 19 | Constantly Bright |
| 10 | Single Flash (Split) | | |

! WARNING ! - Do NOT look directly at the LEDs when in operation to prevent damage to your eyes.

WIRING DIAGRAM



WIRING INSTRUCTIONS

CHANGE FLASH PATTERN

Apply **YELLOW** wire to the **RED (+VDC)** wire. Apply for less than 1 second for the next flash pattern. Apply for more than 5 seconds for the first flash pattern.

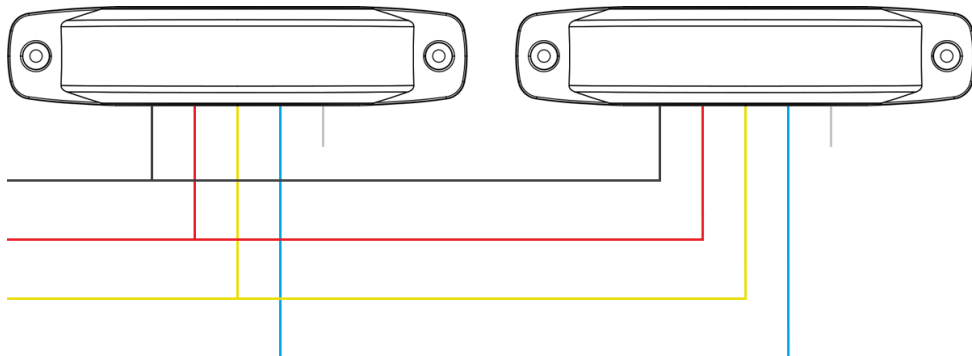
DIMMER FUNCTION (ECE R65 CLASS 2)

Apply **BLUE** wire for 50% dimmer.

! WARNING ! - Unconnected wires MUST be sealed to prevent any water ingress.

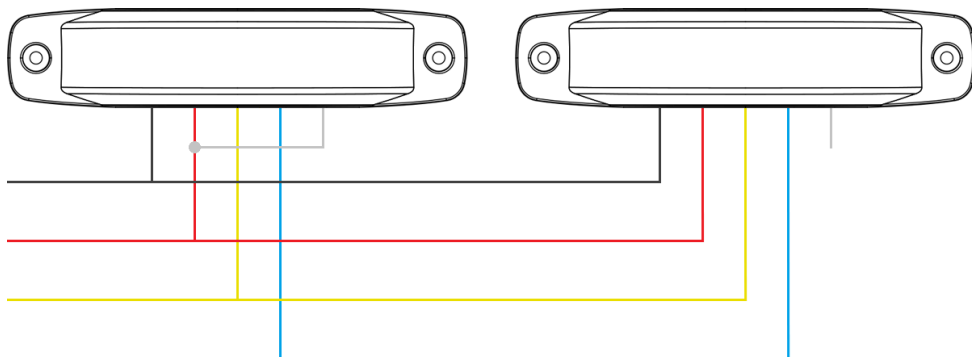
WIRING INSTRUCTIONS

SYNCHRONISATION WIRING DIAGRAM



NOTE - Connect YELLOW wires of all strobes together.

ALTERNATING SYNC WIRING DIAGRAM



NOTE - With the power turned OFF, for Group 1, connect the WHITE wires to the RED(+) wire. For Group 2, leave the WHITE wires unconnected. The patterns will alternate when the power is turned ON.

MOUNTING + FITTING INSTRUCTIONS

Carefully inspect the strobe and all accessories before installing to ensure there are no damaged or missing parts.

Plan all cable routing before attempting installation

Ensure there are no obstructions limiting visibility to traffic.

If the scene light slides or moves easily, a proper installation has NOT been attained.

! CAUTION ! - Disconnect the battery before wiring up the strobe to prevent accidental shorting and/or electrical shock.

! CAUTION ! - When drilling into the vehicle surface, make sure the area is free from anything that could be damaged.

MODULE LENS CLEANING

Occasional cleaning is recommended to ensure optimal light output. Although tough, polycarbonate scratches easily. Clean lens with soap and water or a lens polish using a soft cloth.

! WARNING ! - Do NOT use solvents as they may damage the lens.

TROUBLESHOOTING

| Problem | Probable Cause | Solution |
|-------------------------|---------------------------|--|
| Does not function | Wiring error | Ensure wiring is correct and all wire connections are secure |
| | Blown fuse | Check wiring and fuse. Replace fuse |
| Incorrect flash pattern | Wrong flash configuration | Re-program the flash pattern |

MANUFACTURER'S WARRANTY

Dun-Bri Services Ltd (DBS) warrants that on the date of purchase this product conforms to the specifications (available on request). DBS further warrants that this product is free from defects in materials and workmanship for the warranty period from the date of purchase. DBS will at its discretion, repair or replace any product found to be defective, subject to the Limited Warranty. Damage to parts or products resulting from tampering, accident, abuse, misuse, negligence, unapproved modifications, fire or other hazard, improper installation/operation or failure to maintain in accordance with the reasonable maintenance procedures set forth in DBS's installation and operating instructions shall void the Limited Warranty.

Verbal statements or representation about this product made by salespersons, dealers, agents or other representatives do not constitute part of the warranty agreement. This Limited Warranty may not be amended or extended except by written agreement, signed by an authorised official of DBS, which expressly refers to this Limited Warranty.

EXCLUSION OF OTHER WARRANTIES & LIMITATION OF LIABILITY APPLY

See website for full details.