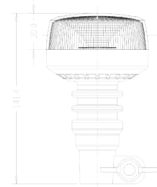
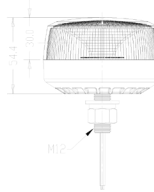
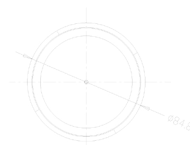


INSTALLATION + OPERATING INSTRUCTIONS



Voltage	12/24V
Technology	LED
Connection	Fly Lead
Flash Patterns	12
Syncable?	Yes
IP Rating	IP67
Approvals	ECE R65, ECE R10

SKU	Mounting	Dimensions
311.025	Flexible DIN Pole	85mm (dia) x 141mm (h)
311.026	Single Bolt	85mm (dia) x 54mm (h)

! IMPORTANT ! - Read all instructions before installing and operating the product. This product must be installed by a qualified automotive technician. Failure to do so may void your warranty.

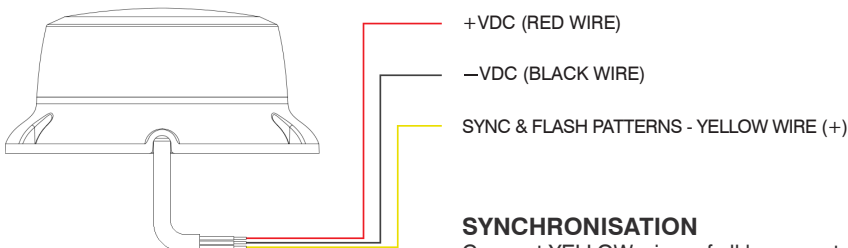
FLASH PATTERNS

01 Single Flash - ECE R65 (150 FPM)	07 Frequency (1500 FPM)
02 Rotating (150 FPM)	08 Single Flash + Quad Flash
03 Single Flash (75 FPM)	09 Single Flash + Frequency
04 Rotating (300 FPM)	10 Single Flash + Rotating
05 Double Flash (150 FPM)	11 Double Flash + Rotating
06 Quad Flash (150 FPM)	12 Combination

CHANGE FLASH PATTERN

Apply YELLOW wire to the RED (+VDC) wire. Apply for less than 1 second for the next flash pattern. Apply for more than 5 seconds for the first flash pattern.

WIRING DIAGRAM



SYNCHRONISATION

Connect YELLOW wires of all beacons together.

MOUNTING + FITTING INSTRUCTIONS

Carefully inspect the product and all accessories before installing to ensure there are no damaged or missing parts.

Plan all cable routing before attempting installation

Ensure there are no obstructions limiting visibility to traffic.

If the product slides or moves easily, a proper installation has NOT been attained.

! CAUTION ! - Disconnect the battery before wiring up the product to prevent accidental shorting and/or electrical shock.

! CAUTION ! - When drilling into the vehicle surface, make sure the area is free from anything that could be damaged.

MODULE LENS CLEANING

Occasional cleaning is recommended to ensure optimal light output. Although tough, polycarbonate scratches easily. Clean lens with soap and water or a lens polish using a soft cloth.

! WARNING ! - Do NOT use solvents as they may damage the lens.

TROUBLESHOOTING

Problem	Probable Cause	Solution
Does not function	Wiring error	Ensure wiring is correct and all wire connections are secure
	Blown fuse	Check wiring and fuse. Replace fuse
Incorrect flash pattern	Wrong flash configuration	Re-program the flash pattern

MANUFACTURER'S WARRANTY

Dun-Bri Services Ltd (DBS) warrants that on the date of purchase this product conforms to the specifications (available on request). DBS further warrants that this product is free from defects in materials and workmanship for the warranty period from the date of purchase. DBS will at its discretion, repair or replace any product found to be defective, subject to the Limited Warranty. Damage to parts or products resulting from tampering, accident, abuse, misuse, negligence, unapproved modifications, fire or other hazard, improper installation/operation or failure to maintain in accordance with the reasonable maintenance procedures set forth in DBS's installation and operating instructions shall void the Limited Warranty.

Verbal statements or representation about this product made by salespersons, dealers, agents or other representatives do not constitute part of the warranty agreement. This Limited Warranty may not be amended or extended except by written agreement, signed by an authorised official of DBS, which expressly refers to this Limited Warranty.

EXCLUSION OF OTHER WARRANTIES & LIMITATION OF LIABILITY APPLY

See website for full details.