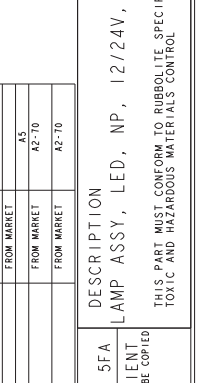
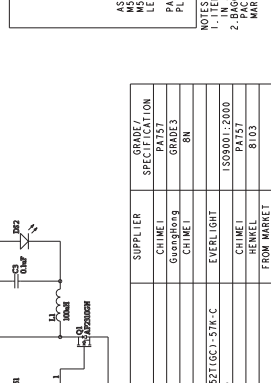
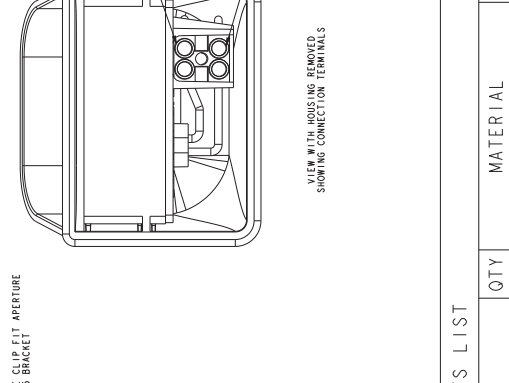
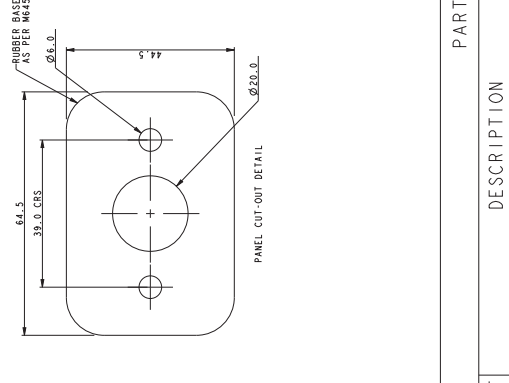


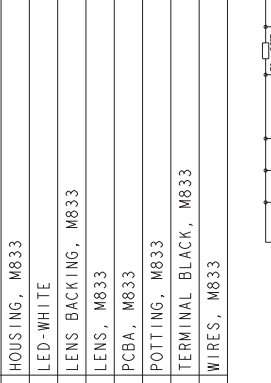
WIRING DIAGRAM



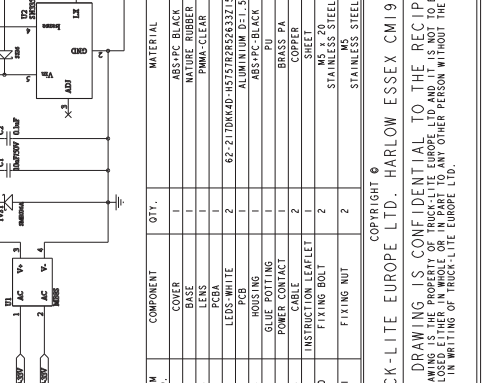
NOTE: ALL MODIFICATIONS TO THIS DRAWING MUST BE CARRIED OUT ON *Pro/Engineer*



SECTION C-C

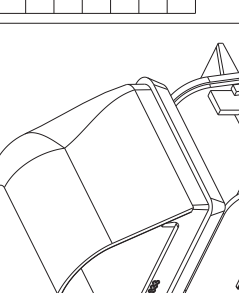


SECTION B-B



REF	DESCRIPTION	QTY	MATERIAL	FINISH
1	COVER, M833	1	ABS+PC	BLACK
2	HOUSING, M833	1	NATURAL RUBBER	BLACK
3	LED-WHITE	2	XTI-5630 CCOV-DN	BLACK
4	LENS BACKING, M833	1	ABS	BLACK
5	LENS, M833	1	PMMA	CLEAR
6	PCBA, M833	1	ALUMINIUM D=1.5	NATURAL
7	POTTING, M833	1		
8	TERMINAL BLACK, M833	1		
9	WIRES, M833	1		

PARTS LIST



NOTES:

- PRODUCT TO BE CLEARLY MARKED WITH RUBBOLITE LOGO.
- ANY CHANGE TO DESIGN OR MANUFACTURE MUST BE ADVISED IN WRITING.
- PARTS TO BE PACKED ONE UNIT PER BOX UNASSEMBLED. MARKED WITH TL SPEC BARCODE LABELS TO BE FREED FROM FLOW MARKS AND VISUAL DEFECTS.
- ALL LAMP ASSEMBLIES TO BE 100% ELECTRICALLY TESTED.
- VOLTAGE 12/24V. 1W. DUAL POLARITY FUNCTION.
- DIRT (RETAINED ON 44µ APERTURE) (%WH) : 0.019 - 0.036
- VOLATILE MATTER (%): 0.4 MAX
- INITIAL MOISTURE (%): 0.28 - 0.32
- PLI (%): 65 - 89
- MOONEY VISCOSITY ML+4 (100 DEG.C) : 74 - 76
- PERMISSIBLE CONTACT WITH PETROL NOT
- IMPACT TESTS TO BE COMPLETED ON OUTER COVER ONLY
- LENS AND PCB TO BE HERMETICALLY HOUSING SEALED
- LENS AND COVER TO BE HERMETICALLY SEALED
- PRODUCT DETAILS TO BE CLEARLY MARKED
- APPROVAL REQUIREMENTS:

APPROVED TO THE FOLLOWING REGULATIONS:

- NUMBER PLATE ECE REG 4
- SQUARE PLATE & LONG PLATE
- ESTIMATED WEIGHT 0.100 kg

CHANGE NO.	NOT REVISION	DATE	BY	SCALE	ORIGINATOR
1	1	2009	J Long	2:1	Oc1-23-19
2	2		NB		
3	3				

THIS DRAWING IS CONFIDENTIAL TO THE RECIPIENT AND IS NOT TO BE COPIED OR DISCLOSED EITHER IN WHOLE OR IN PART TO ANY OTHER PERSON WITHOUT THE CONSENT IN WRITING OF TRUCK-LITE EUROPE LTD.

TRUCK-LITE EUROPE LTD. HARLOW ESSEX CM19 5FA

DESCRIPTION: LAMP ASSY, LED, NP, 12/24V, M833

SERIES NO. 833-11-04

ISSUE NO. 3